

Operator name and signature: RU Rolf Uggilt

Output:	5914 lm
Peak:	810 cd
Lux @50cm:	3239 Lux
Power:	58,8 W
Power Factor / DF ϕ 1:	0,6
Standby power	0,36 W

Light efficacy:

101 Lumen/Watt

Light quality:

CRI: 85,6

Color temperature:

6886 K



According to regulation (EU) 2019/2015

Directionality:	Non-Directional
Useful Lumen:	5914 lm
η TM - Efficacy	101 lm/W
Energy Class:	F

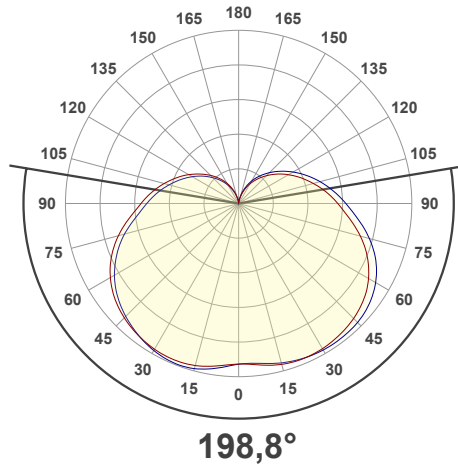
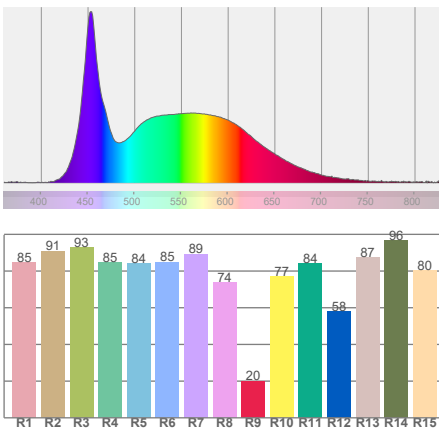
Product name:
AREA 6K Connect

Item number:
03.6108C

Date and time:
25-04-2022 14:37:38

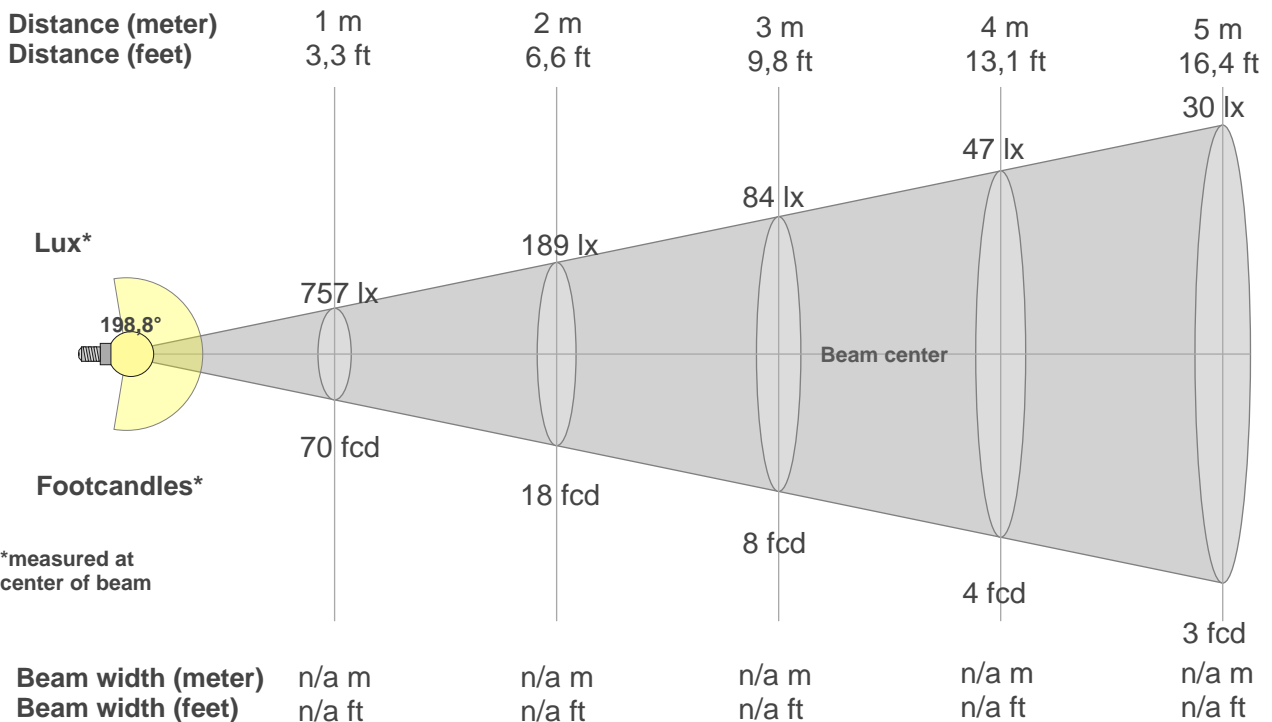
Description:
Standby Power: 0,36W
Sensor Distance: 300cm
Warmup: <2% in 15 minutes
Power Supply: CAS PSU

Spectra



BEAM DETAILS

Beam distance: 55 meters



*measured at center of beam

Beam intensities from 1-20m

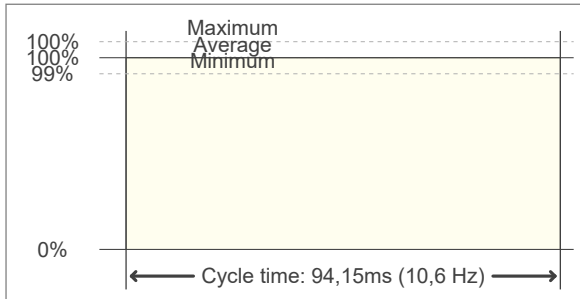
1m	2m	3m	4m	5m	6m	7m	8m	9m	10m	11m	12m	13m	14m	15m	16m	17m	18m	19m	20m
3,3ft	6,6ft	9,8ft	13,1ft	16,4ft	19,7ft	23ft	26,2ft	29,5ft	32,8ft	36,1ft	39,4ft	42,7ft	45,9ft	49,2ft	52,5ft	55,8ft	59,1ft	62,3ft	65,6ft
757lx	189lx	84lx	47lx	30lx	21lx	15lx	12lx	9lx	8lx	6lx	5lx	4lx	4lx	3lx	3lx	3lx	2lx	2lx	2lx
70,3fcd	17,6fcd	7,8fcd	4,4fcd	2,8fcd	2fcd	1,4fcd	1,1fcd	0,9fcd	0,7fcd	0,6fcd	0,5fcd	0,4fcd	0,4fcd	0,3fcd	0,3fcd	0,2fcd	0,2fcd	0,2fcd	0,2fcd

FLICKER DETAILS

Flicker curve (complete sampled flicker signal)



Flicker frame (frame of one flicker period)



Flicker frequency:	10,62 Hz
Flicker index:	0
Flicker percentage:	0,04 %
SVM: (Visual flicker)	0
Pst LM:	0,01
SDCM	n/a
Rated Color Temperature	6886 K
Duv	0,0010
CIE Coordinates (x, y)	0,307, 0,322
CIE Coordinates (u, v)	0,197, 0,309

WARMUP DETAILS according to EN 13032-1

